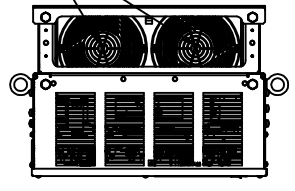
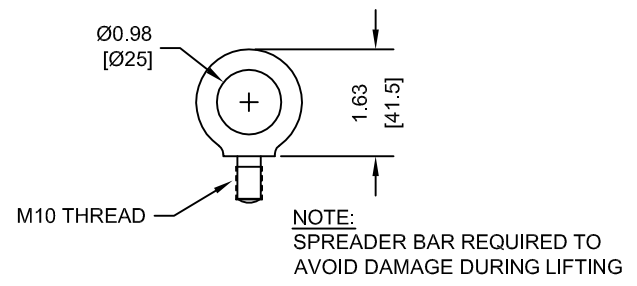


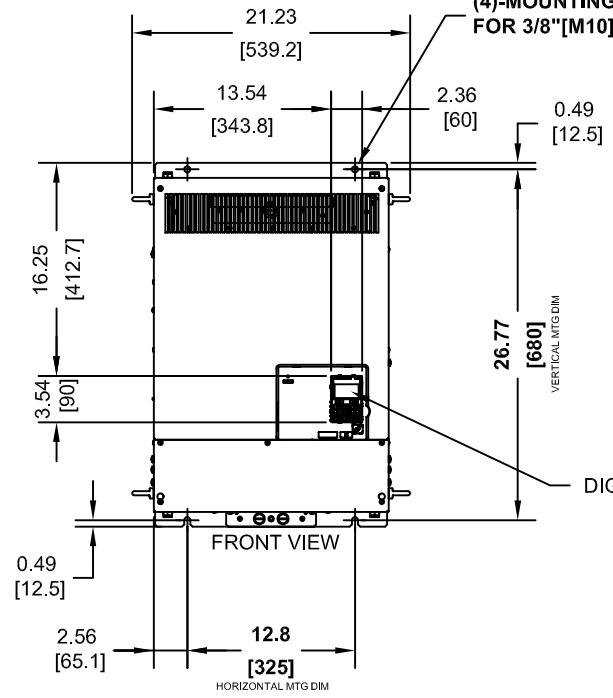
(2) EXTERNAL COOLING FANS



LIFTING AND EYEBOLT DETAILS

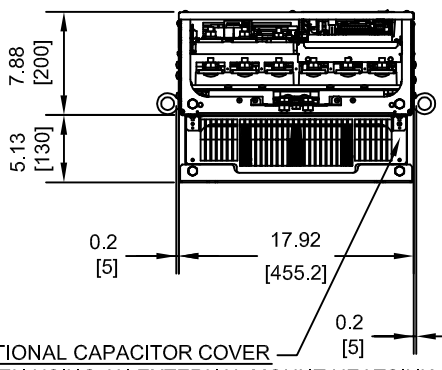
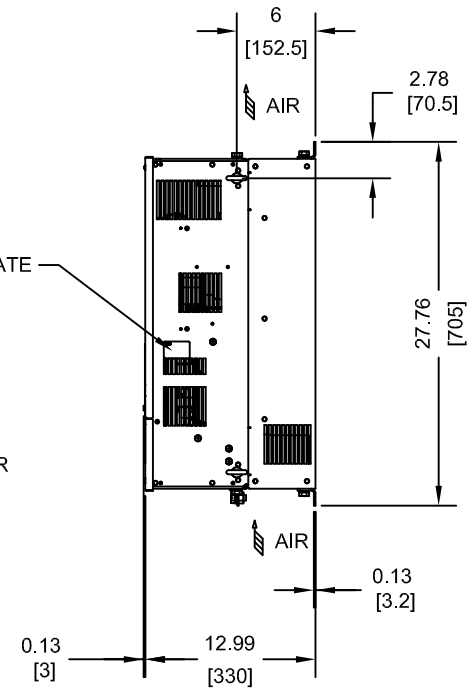


(4)-MOUNTING HOLES FOR 3/8" [M10] SCREWS



NAMEPLATE

DIGITAL OPERATOR



OPTIONAL CAPACITOR COVER WHEN USING AN EXTERNAL MOUNT HEATSINK, UL COMPLIANCE REQUIRES COVERING EXPOSED CAPACITORS IN THE MAIN CIRCUIT TO PREVENT INJURY. CONSULT MANUAL FOR DETAILS.

MODEL # CIMR-AU	INPUT TYPE	VOLTAGE 3-PHASE (VAC)	OUTPUT CURRENT (A)		WEIGHT LBS (Kg)	HEAT LOSS (W)					
			ND	HD		ND (Fc=2kHz)			HD (Fc=SEE NOTES)		
			INT	EXT		INT	EXT	TOT	INT	EXT	TOT
2A0250AXX	6 PULSE	200/240	250	215	167 (76)	594	1764	2358	466	1514	1980
2A0312AXX	6 PULSE		312	283	176 (80)	665	2020	2685	588	1936	2524
4A0208AXX	6 PULSE	380/480	208	180	174 (79)	607	1800	2407	541	1771	2312
4T0208AXX	12 PULSE		208	180	166 (75)	553	1746	2299	586	2199	2785
5A0125AXX	6 PULSE	500/600	125	99	174 (79)	537	1641	2178	422	1328	1750
5A0145AXX	6 PULSE		145	130	174 (79)	603	1860	2463	508	1638	2146

NOTES:

XX DENOTES AA-ZZ

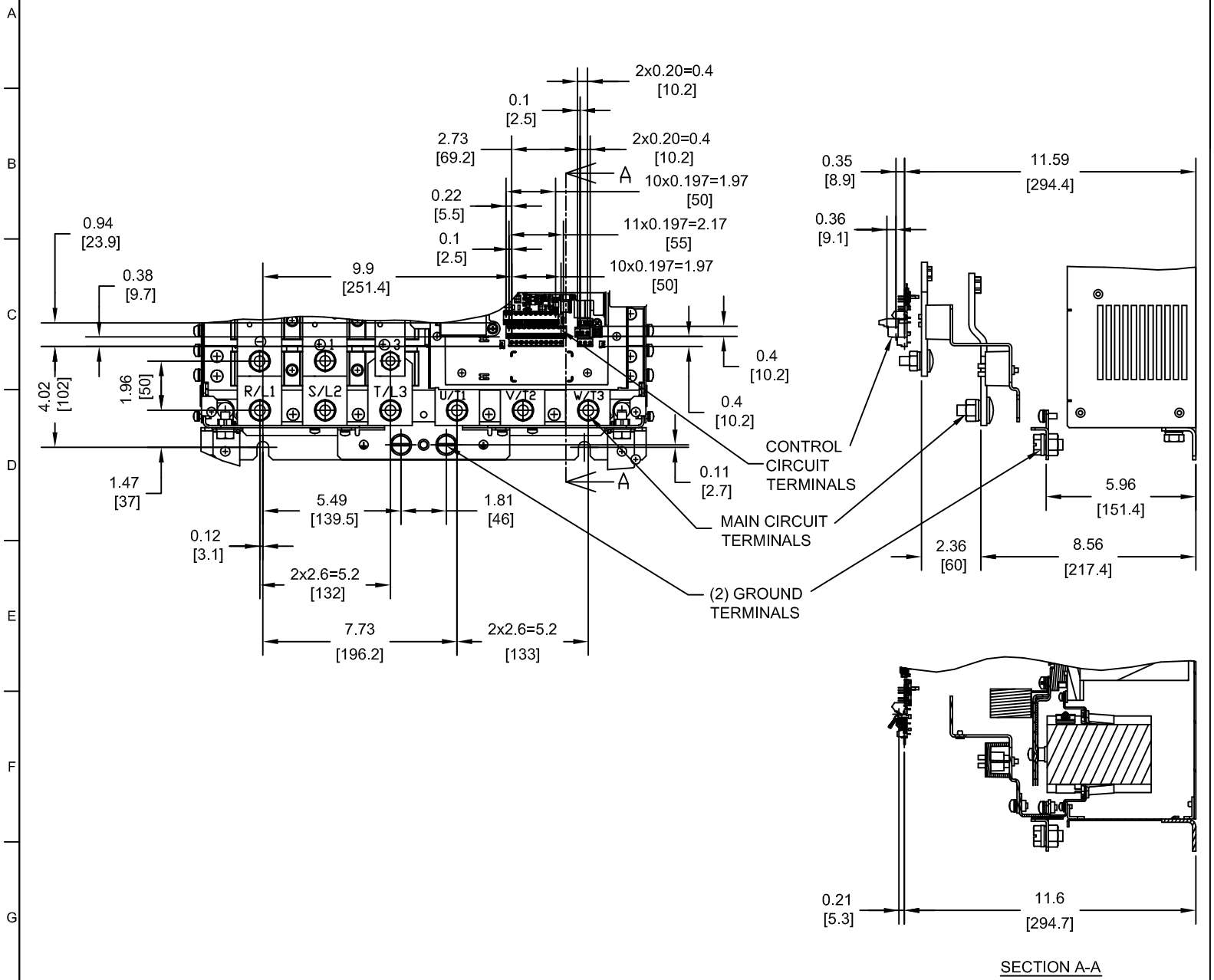
INT=INTERNAL COMPONENTS
EXT=EXTERNAL HEATSINK
TOT=TOTAL

FOR HD VALUES, CARRIER FREQ. IS SET TO:
Fc=5kHz FOR MODELS 2A0250, 2A0312, 4A0208 AND 4T0208
Fc=2kHz FOR MODELS 5A0125 AND 5A0145

FOR ADDITIONAL DETAILS AND SPECIFICATIONS, CONSULT MANUAL

TOLERANCES / REFERENCES:			DRAWN: J. MATTAS CHECKED: J. PIOTROWSKI TECH: J. CAIRO APPROVED: T. SASADA ORIGINAL DESIGN: -	DATE: 11-4-10 DATE: 12-14-10 DATE: 12-19-10 DATE: 12-21-10 DATE: -	TITLE: A1000 DIMENSION DRAWING FRAME SIZE 11 IP00 ENCLOSURE 2A0250A-0312A, 4A0208A, 4T0208A, 5A0125A-0145A SIZE: A REVISION: R01 PAGE: 1 of 5 DRAWING #: DD.A1K.FR11.IP00
UNITS: IN [mm]	SCALE: 1:15		THIS DOCUMENT AND INFORMATION CONTAINED IN IT ARE CONFIDENTIAL, AND CANNOT BE COPIED OR DISCLOSED IN WHOLE OR IN PART WITHOUT THE EXPRESS WRITTEN CONSENT OF YASKAWA AMERICA, INC.		

TERMINAL AND WIRING DETAILS (SCALE 1:6)
 AU2A0250A AND AU2A0312A ONLY



SECTION A-A

TERMINAL AND WIRE SPECIFICATIONS FOR
 MAIN CIRCUIT AND GROUND

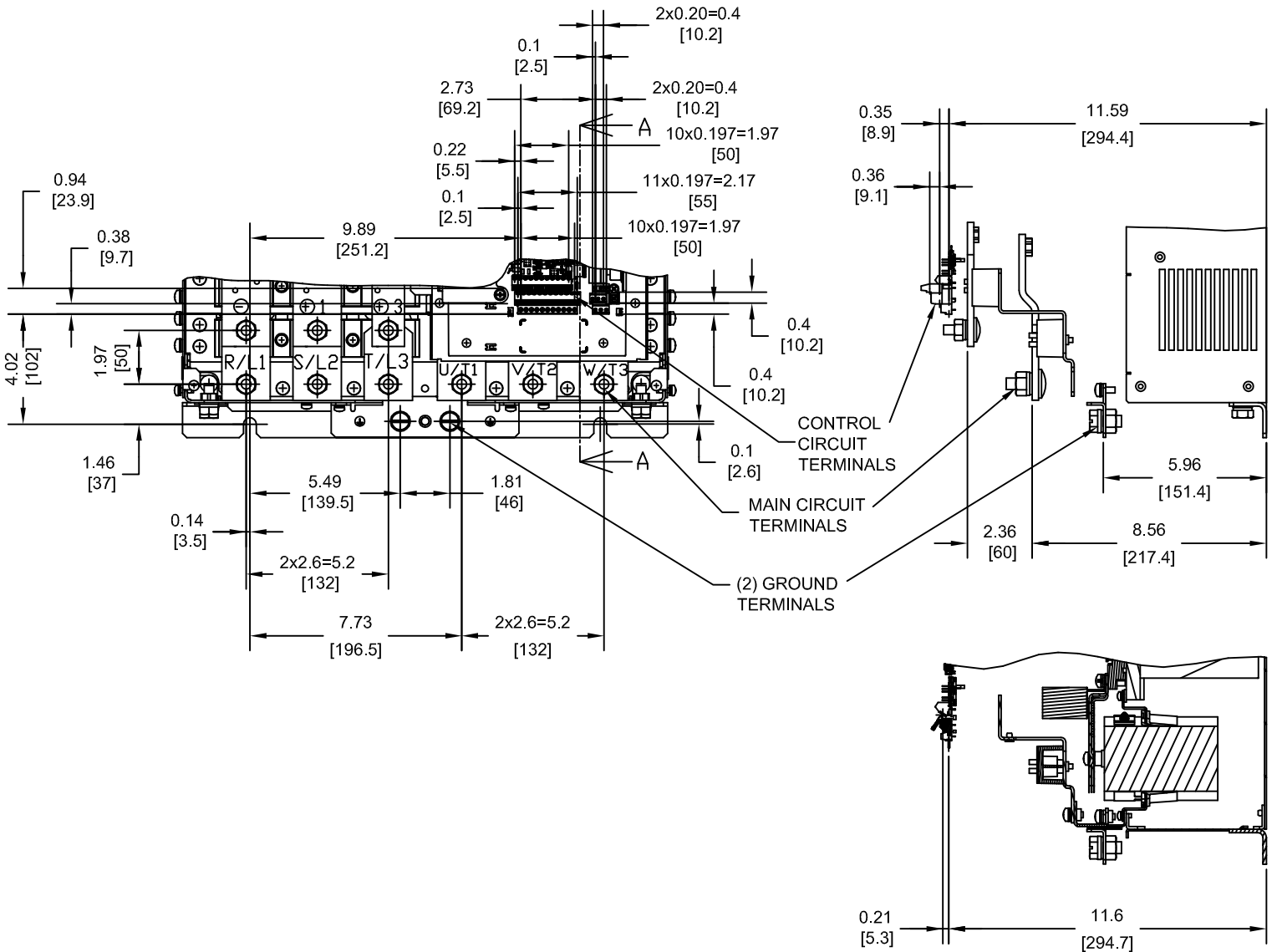
MODEL # CIMR-AU	TERMINAL SYMBOL	TERMINAL SCREW	CLAMPING TORQUE lb.in.(N.m.)	
2A0250A 2A0312A	R/L1, S/L2, T/L3	M12	283.2 TO 354.0 (32 TO 40)	
	U/T1, V/T2, W/T3			
	⊖, ⊕1			
	⊕3	M10		159.3 TO 203.6 (18 TO 23)
	⊕	M12		283.2 TO 354.0 (32 TO 40)

NOTE: REFER TO APPLICABLE CODES FOR PROPER WIRE TYPE AND SIZE

FOR ADDITIONAL DETAILS AND SPECIFICATIONS, CONSULT MANUAL

TOLERANCES / REFERENCES:			DRAWN: J. MATTAS	DATE 11-4-10	TITLE: A1000 DIMENSION DRAWING
UNITS: IN [mm]			SCALE: BY VIEW	CHECKED: J. PIOTROWSKI	DATE 12-14-10
THIS DOCUMENT AND INFORMATION CONTAINED IN IT ARE CONFIDENTIAL, AND CANNOT BE COPIED OR DISCLOSED IN WHOLE OR IN PART WITHOUT THE EXPRESS WRITTEN CONSENT OF YASKAWA AMERICA, INC.			TECH: J. CAIRO	DATE 12-19-10	IP00 ENCLOSURE
			APPROVED: T. SASADA	DATE 12-21-10	2A0250A-0312A, 4A0208A, 4T0208A, 5A0125A-0145A
			ORIGINAL DESIGN: -	DATE -	SIZE A
					REVISION R01
					PAGE 2 of 5
					DRAWING # DD.A1K.FR11.IP00

TERMINAL AND WIRING DETAILS (SCALE 1:6)
 AU4A0208A, AU5A0125A AND AU5A0145A ONLY



SECTION A-A

TERMINAL AND WIRE SPECIFICATIONS FOR
 MAIN CIRCUIT AND GROUND

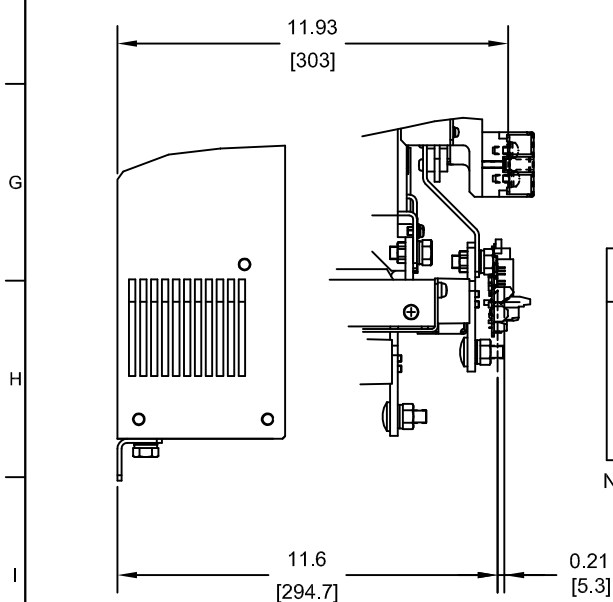
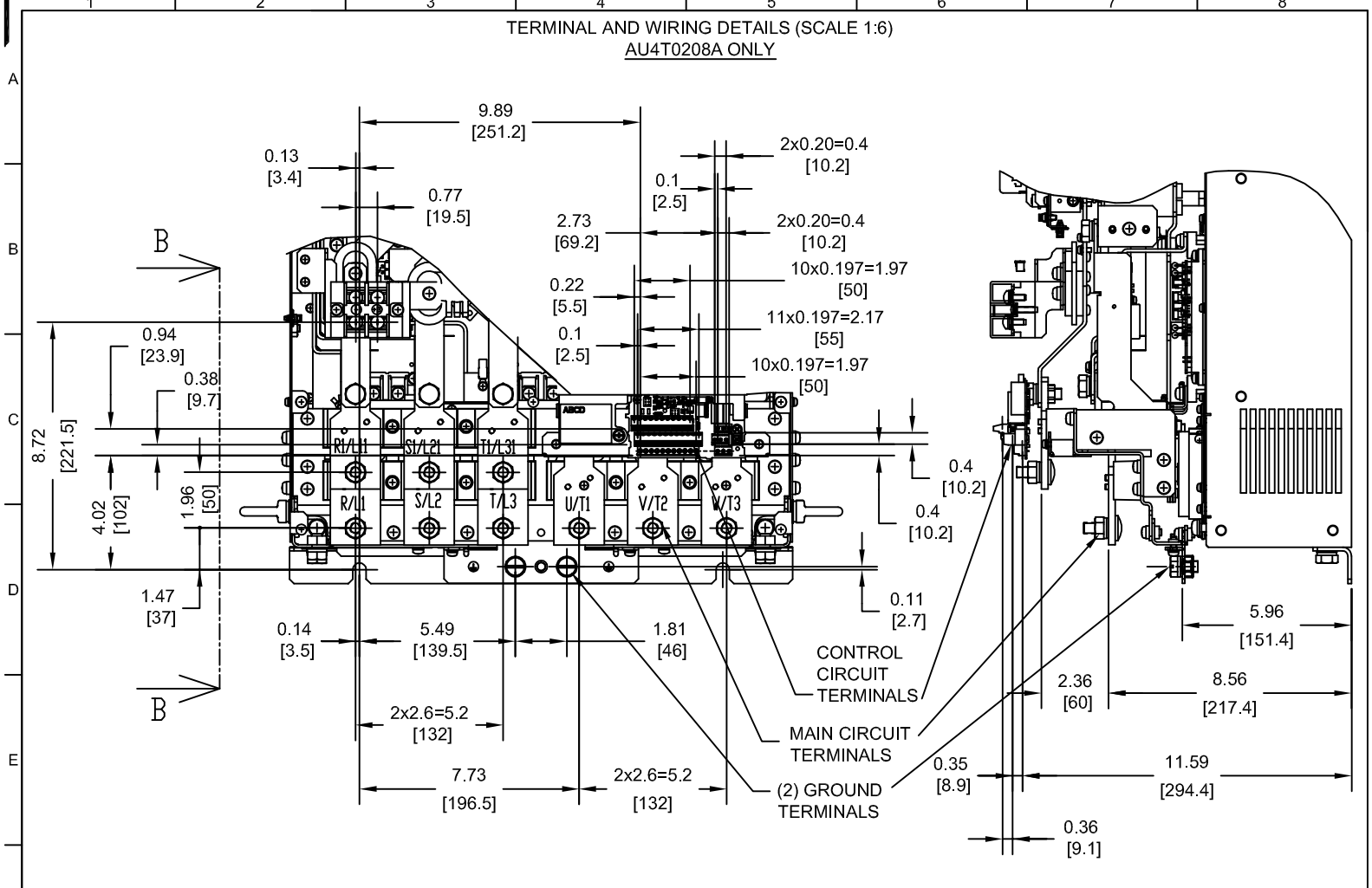
MODEL # CIMR-AU	TERMINAL SYMBOL	TERMINAL SCREW	CLAMPING TORQUE lb.in.(N.m.)
4A0208A 5A0125A 5A0145A	R/L1, S/L2, T/L3	M10	159.3 TO 203.6 (18 TO 23)
	U/T1, V/T2, W/T3		
	⊖, ⊕1		
	⊕3		
	⊕		

NOTE: REFER TO APPLICABLE CODES FOR PROPER WIRE TYPE AND SIZE

FOR ADDITIONAL DETAILS AND SPECIFICATIONS, CONSULT MANUAL

TOLERANCES / REFERENCES:			DRAWN: J. MATTAS DATE: 11-4-10	TITLE: A1000 DIMENSION DRAWING FRAME SIZE 11 IP00 ENCLOSURE	
UNITS: IN [mm]	SCALE: BY VIEW		CHECKED: J. PIOTROWSKI DATE: 12-14-10	TECH: J. CAIRO DATE: 12-19-10	ORIGINAL DESIGN: T. SASADA DATE: 12-21-10
THIS DOCUMENT AND INFORMATION CONTAINED IN IT ARE CONFIDENTIAL, AND CANNOT BE COPIED OR DISCLOSED IN WHOLE OR IN PART WITHOUT THE EXPRESS WRITTEN CONSENT OF YASKAWA AMERICA, INC.		APPROVED: T. SASADA DATE: 12-21-10	SIZE: A	REVISION: R01	PAGE: 3 of 5
		DRAWING #: DD.A1K.FR11.IP00			

TERMINAL AND WIRING DETAILS (SCALE 1:6)
 AU4T0208A ONLY



SECTION B-B

TERMINAL AND WIRE SPECIFICATIONS FOR
 MAIN CIRCUIT AND GROUND

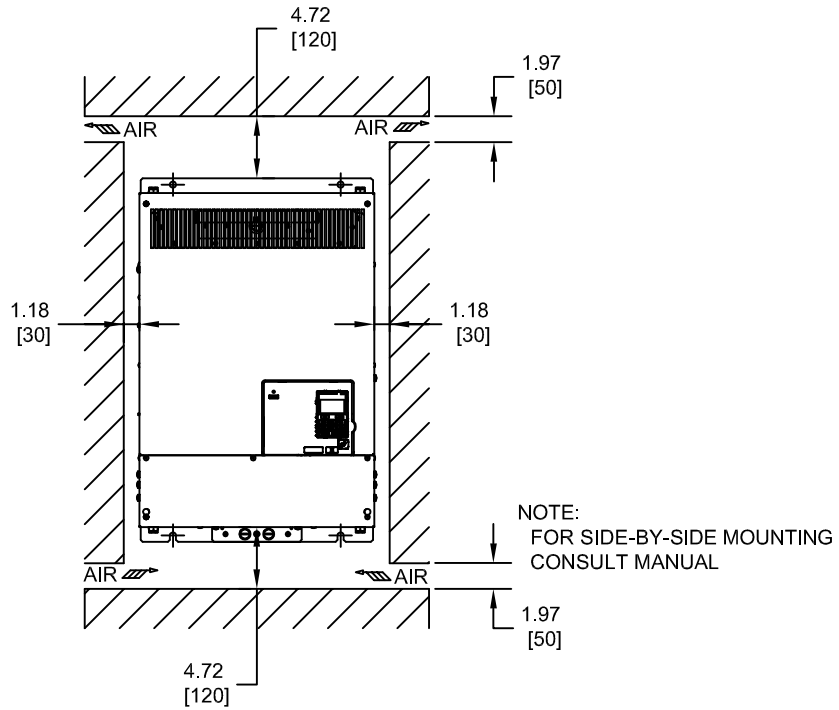
MODEL #	TERMINAL SYMBOL	TERMINAL SCREW	CLAMPING TORQUE lb.in.(N.m.)	WIRE RANGE AWG(mm ²)
4T0208A	R/L1, S/L2, T/L3	M10	159.3 TO 203.6 (18 TO 23)	SEE NOTE
	R1/L11, S1/L21, T1/L31			
	U/T1, V/T2, W/T3			
	⊖, ⊕3	M6	22.1 TO 26.6 (2.5 TO 3.0)	22-1/0 (0.3-53.5)
	⊕	M10	159.3 TO 203.6 (18 TO 23)	SEE NOTE

NOTE: REFER TO APPLICABLE CODES FOR PROPER WIRE TYPE AND SIZE

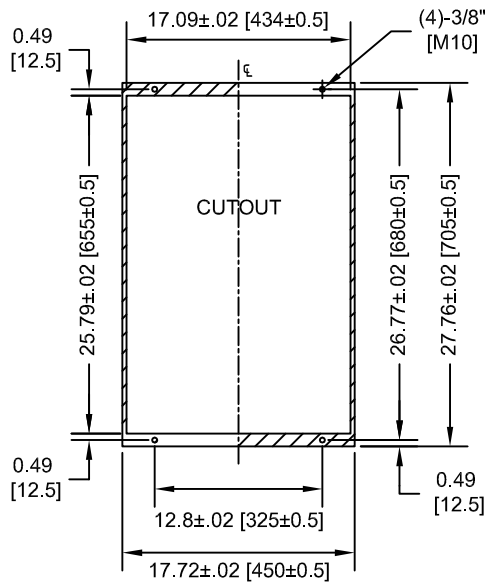
FOR ADDITIONAL DETAILS AND SPECIFICATIONS, CONSULT MANUAL

TOLERANCES / REFERENCES:		DRAWN:	J. MATTAS	DATE:	11-4-10	TITLE: A1000 DIMENSION DRAWING FRAME SIZE 11 IP00 ENCLOSURE 2A0250A-0312A, 4A0208A, 4T0208A, 5A0125A-0145A			
		CHECKED:	J. PIOTROWSKI	DATE:	12-14-10				
		TECH:	J. CAIRO	DATE:	12-19-10				
		APPROVED:	T. SASADA	DATE:	12-21-10				
UNITS: IN [mm]	SCALE: BY VIEW	ORIGINAL DESIGN:	-	DATE:	-	DRAWING #: DD.A1K.FR11.IP00			
				SIZE:	A	REVISION:	R01	PAGE:	4 of 5

MINIMUM INSTALLATION CLEARANCES (SCALE 1:15)



PANEL CUTOUT FOR EXTERNAL HEATSINK MOUNTING CONFIGURATION (SCALE 1:15)



NOTE:
EXPOSED HEATSINK DEPTH
D=5.12" MINUS PANEL THICKNESS

FOR ADDITIONAL DETAILS AND SPECIFICATIONS, CONSULT MANUAL

TOLERANCES / REFERENCES:			DRAWN: J. MATTAS CHECKED: J. PIOTROWSKI TECH: J. CAIRO APPROVED: T. SASADA ORIGINAL DESIGN: -	DATE: 11-4-10 DATE: 12-14-10 DATE: 12-19-10 DATE: 12-21-10 DATE: -	TITLE: A1000 DIMENSION DRAWING FRAME SIZE 11 IP00 ENCLOSURE 2A0250A-0312A, 4A0208A, 4T0208A, 5A0125A-0145A
UNITS: IN [mm]	SCALE: BY VIEW		THIS DOCUMENT AND INFORMATION CONTAINED IN IT ARE CONFIDENTIAL, AND CANNOT BE COPIED OR DISCLOSED IN WHOLE OR IN PART WITHOUT THE EXPRESS WRITTEN CONSENT OF YASKAWA AMERICA, INC.	SIZE A REVISION R01 PAGE 5 of 5	DRAWING #: DD.A1K.FR11.IP00